

**-SPECIFICATION-**

**Box Height:** Beer Cooler 10'-0" (9'-8" Interior)

**Insulation:** 4" thick AK-XPS4 Extruded foam UL classified core flame spread 15, Smoke rating less than 165

**Compartment 1 - Beer Cooler**

**D1** - (5) Anthony Door model # 401 (new size)-3075-NT right hinged glass display doors with Black finish, Trimline Black handle, LED 72" lights and (5)24" deep Black shelves.

**D2** - (1) Anthony Door model # 403 (new size)-3081-NT left hinged glass display door with Black finish, Trimline Black handle, LED lights and no shelves.

**Refrigeration:**

(1) 3 HP Bohn DOE Compliant Outdoor Condensing Unit, Model BCH0030MBACZA0000, 208-230/1/60, MCA 29.5 Amps, BTUH 31930, Medium Temperature, Scroll, Air-cooled, R-404A, This refrigeration system is designed and certified for use in walk-in cooler applications -

(2) Bohn DOE Compliant BELO155BS6EEAB0400, Low Profile Electric Defrost, 1.5 Fan Amps with Fixed Speed EC motor (1) Defrost Timer

**Wall Panels**

Interior Finish: 26 Ga. Stucco Embossed Acrylume

Exterior Finish: 26 Ga. Stucco Embossed Acrylume

**Ceiling Panels**


Interior Finish: 26 Ga. Stucco Embossed Acrylume

Exterior Finish: 26 Ga. Stucco Embossed Acrylume

**Accessories Shipped Loose**

(9) CEILING PANEL SUPPORT HANGER 4" ALUMINUM CHANNEL IN 10' SECTIONS WITH (4) 3/8" X 8" BOLTS (PER LINEAR FT)

Customer Approval:

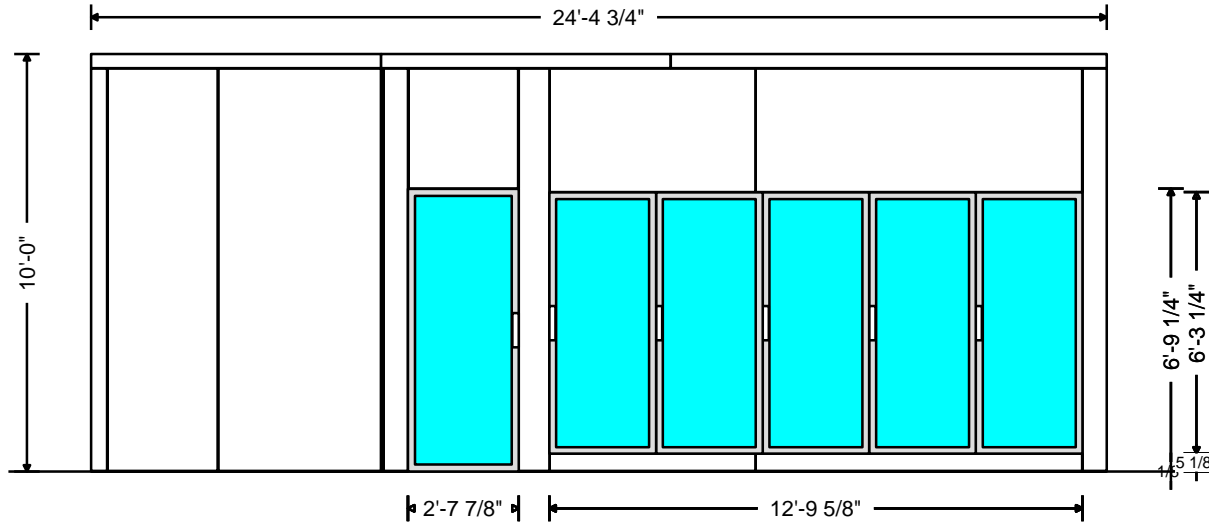
Quote #: 21-11766 Revision: 5	Project: Old Koke Plant	Date: 10/15/2021	
Customer:US Foods Culinary Equipment & Supplies (FL)	Page 1 of 3		

**-SPECIFICATION-Continued**

- (1) Extended 4 Year Compressor Warranty
- (1) INVERTED L SHAPE EXTERIOR WALL CORNER NO FLOOR EACH
- (9) METAL TRIM CAP FOR CEILING SUPPORT HANGER 4" ALUMINUM CHANNEL (10' SECTIONS) ACRYLUME, AND TEK SCREWS (PER LINEAR FT)
- (13) NSF VINYL FLOOR SCREED 72"
- (1) PRV 4" Diameter (mounted on 4" wall next to door) Good up to 1,600 cubic ft.
- (1) Vapor proof light, outside switch, & thermometer (loose)for Plug Doors Cooler or Freezer

**Notes:**

\* Allow a minimum of 2" clearance around all sides of the walk-in for proper air circulation



Customer Approval:

\_\_\_\_\_

Quote #: 21-11766 Revision: 5

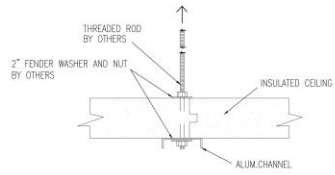
Project: Old Koke Plant

Date: 10/15/2021

Customer:US Foods Culinary Equipment & Supplies (FL)

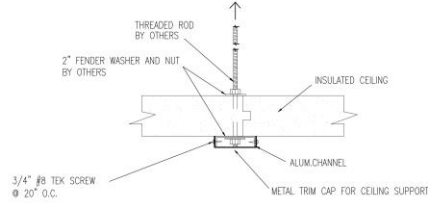
Page 2 of 3





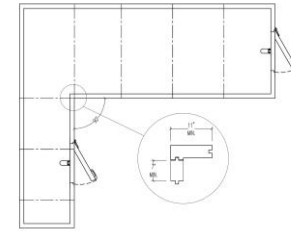
**CEILING PANEL SUPPORT**

10039: CEILING PANEL SUPPORT HANGER CHANNEL (10' SECTIONS)



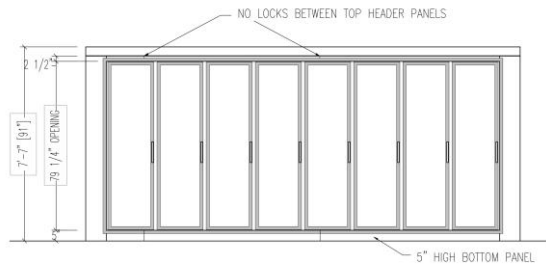
**METAL TRIM COVER FOR CEILING SUPPORT**

10040: METAL TRIM CAP FOR CEILING SUPPORT HANGER 4" ALUMINUM CHANNEL (10' SECTIONS) ACRYLUME, AND TEK SCREWS



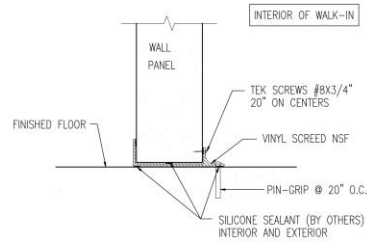
**INVERTED L-SHAPE CORNER**

10052: INVERTED L SHAPE EXTERIOR WALL CORNER NO FLOOR EACH



**GLASS DOOR FRAME OPENING**

8080: Glass door opening on wall



**VINYL CREED WALL PANEL**

8823: NSF VINYL FLOOR SCREED 72"

Quote #: 21-11766 Revision: 5

Project: Old Koke Plant

Date: 10/15/2021

Customer: US Foods Culinary Equipment & Supplies (FL)

Page 3 of 3



**-SPECIFICATION-**

**Box Height:** Cooler 8'-2 1/4" (7'-10 1/4" Interior)

**Insulation:** 4" thick AK-XPS4 Extruded foam UL classified core flame spread 15, Smoke rating less than 165

**Compartment 1 - Cooler**

**D1 - (1) Standard 36" x 76" Right hinged flush door with brushed hardware. Interior & Exterior finish: 26 Ga. Stucco Embossed Acrylume. Heavy duty deadbolt handle latch. Digital LED Thermometer with pilot light switch. 1807 11w, Vapor Proof, 120V. LED fixture. 82 Lumens /watt Angled face . Requires 115vac. 1 amps.**

**D2 - (9) Anthony Door model # 401 (new size)-3075-NT mixed hinge (see drawing) glass display doors with Black finish, Trimline Black handle, LED 72" lights and (5)24" deep Black shelves.**

**Refrigeration:**

(1) 3 HP Bohn DOE Compliant Outdoor Condensing Unit, Model BCH0030MBACHA0100, 208-230/1/60, MCA 21.4 Amps, BTUH 26370, Medium Temperature, Hermetic, Air-cooled, R-404A, This refrigeration system is designed and certified for use in walk-in cooler applications

(2) Bohn DOE Compliant BEL0125AS6AMAB0400, Low Profile Air Defrost, 1.8 Fan Amps with 2 Speed EC motor

(1) Extended 4 year compressor Warranty

**Wall Panels**

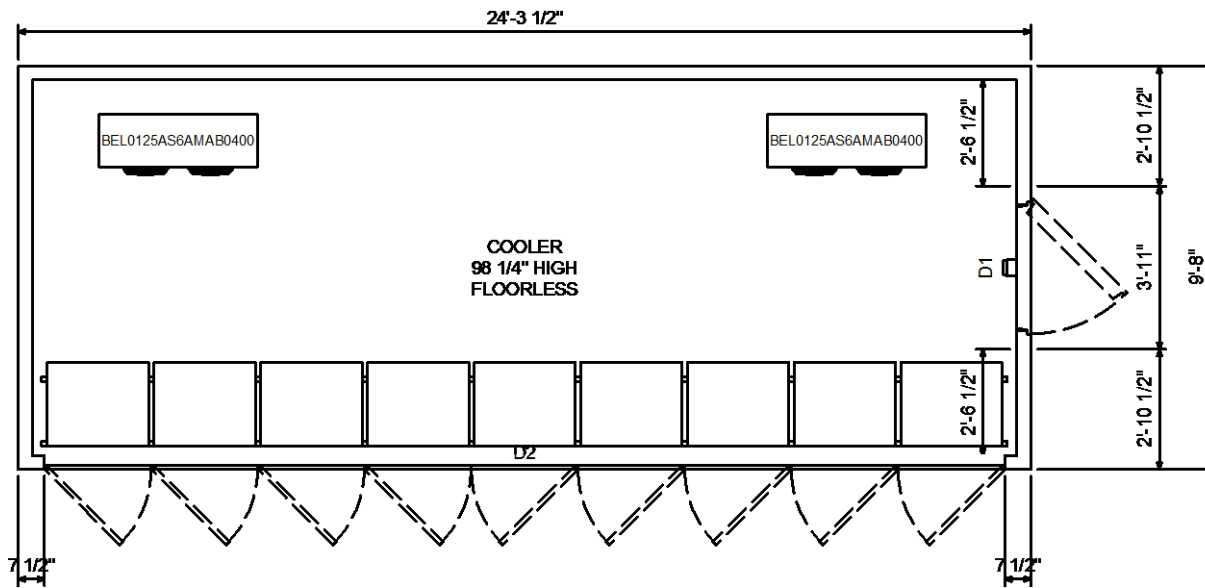
Interior Finish: 26 Ga. Stucco Embossed Acrylume

Exterior Finish: 26 Ga. Stucco Embossed Acrylume


**Ceiling Panels**

Interior Finish: 26 Ga. Stucco Embossed Acrylume

Exterior Finish: 26 Ga. Stucco Embossed Acrylume



Customer Approval:

Quote #: 21-11775 Revision: 3	Project: Old Koke Plant	Date: 10/15/2021	
Customer:US Foods Culinary Equipment & Supplies (FL)	Page 1 of 4		

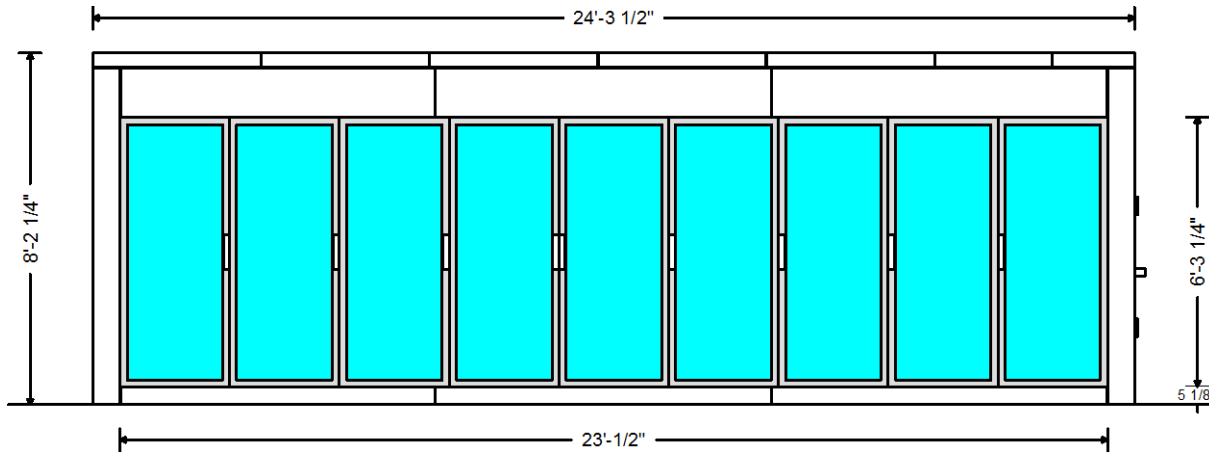
**-SPECIFICATION-Continued**

**Accessories Shipped Loose**

(11) NSF VINYL FLOOR SCREED 72"

**Notes:**

\* Allow a minimum of 2" clearance around all sides of the walk-in for proper air circulation



Customer Approval:

Quote #: 21-11775 Revision: 3

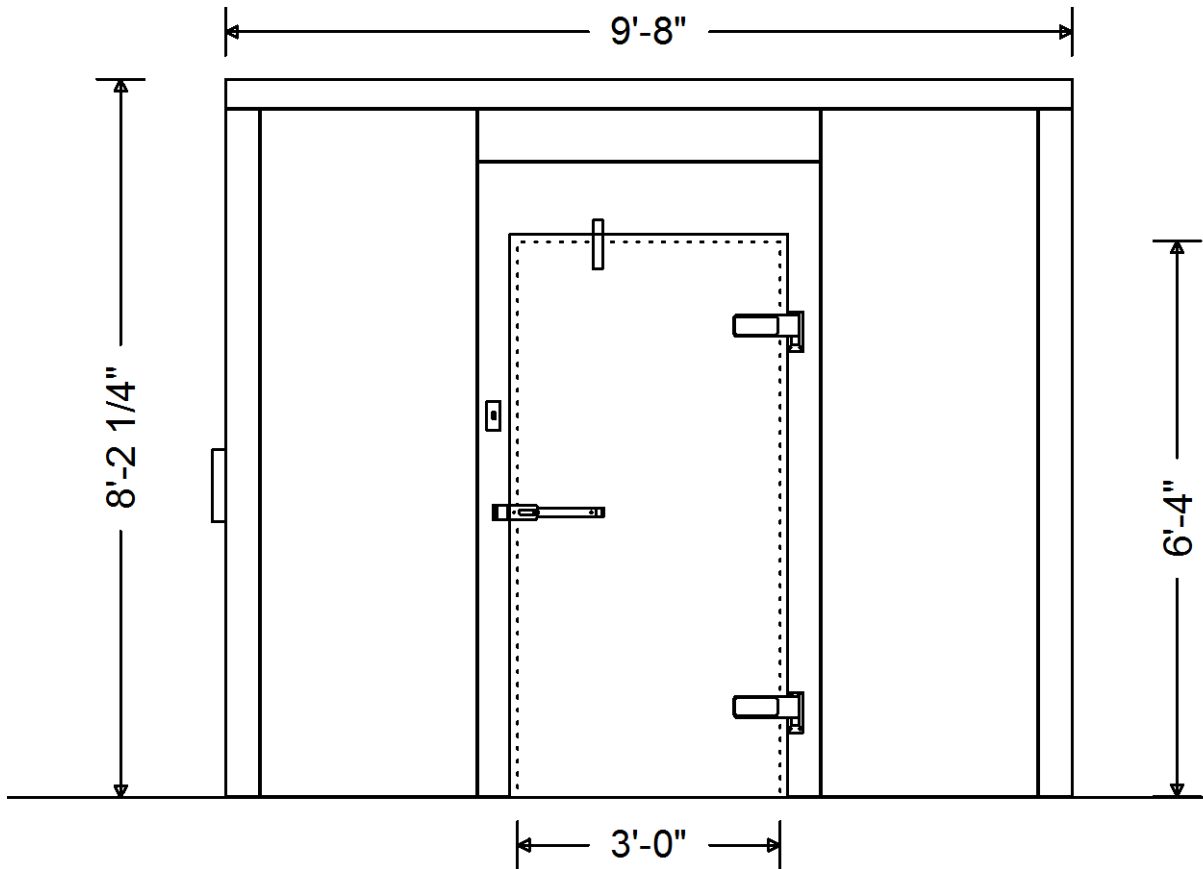
Project: Old Koke Plant

Date: 10/15/2021

Customer:US Foods Culinary Equipment & Supplies (FL)

Page 2 of 4





Customer Approval:

Quote #: 21-11775 Revision: 3

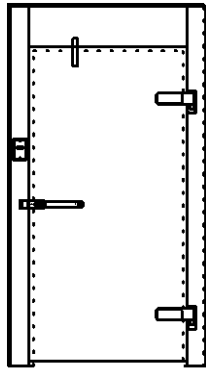
Project: Old Koke Plant

Date: 10/15/2021

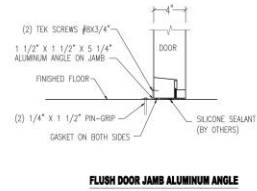
Customer: US Foods Culinary Equipment & Supplies (FL)

Page 3 of 4

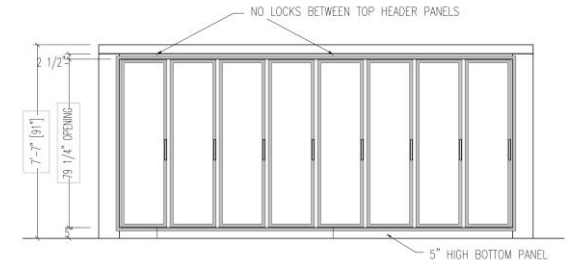




D1

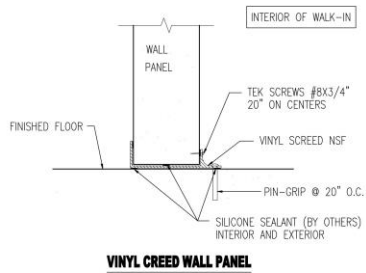


20018: INTERIOR FLUSH DOOR JAMB ALUMINUM ANGLE 1 1/2" X 1 1/2" X 5 1/4" TO SECURE TO CONCRETE FLOOR QUANTITY 2 REQUIRED



GLASS DOOR FRAME OPENING

8080: Glass door opening on wall



8823: NSF VINYL FLOOR SCREED 72"

Quote #: 21-11775 Revision: 3

Project: Old Koke Plant

Date: 10/15/2021

Customer: US Foods Culinary Equipment & Supplies (FL)

Page 4 of 4



**-SPECIFICATION-**

**Box Height:** Freezer 8'-2 1/4" (7'-6 1/4" Interior)  
Cooler 8'-2 1/4" (7'-10 1/4" Interior)

**Insulation:** 4" thick AK-XPS4 Extruded foam UL classified core  
flame spread 15, Smoke rating less than 165

**Compartment 1 - Freezer**

**D1** - (1) Standard 36" x 76" Right hinged flush door with brushed hardware. Interior & Exterior finish: 26 Ga. Stucco Embossed Acrylume. Energy saving temperature regulating thermostat heater wire and heated relief vent. Heavy duty deadbolt handle latch. Digital LED Thermometer with pilot light switch. 1807 11w, Vapor Proof, 120V. LED fixture. 82 Lumens /watt Angled face . Requires 115vac. 2.2 amps.

**Refrigeration:**

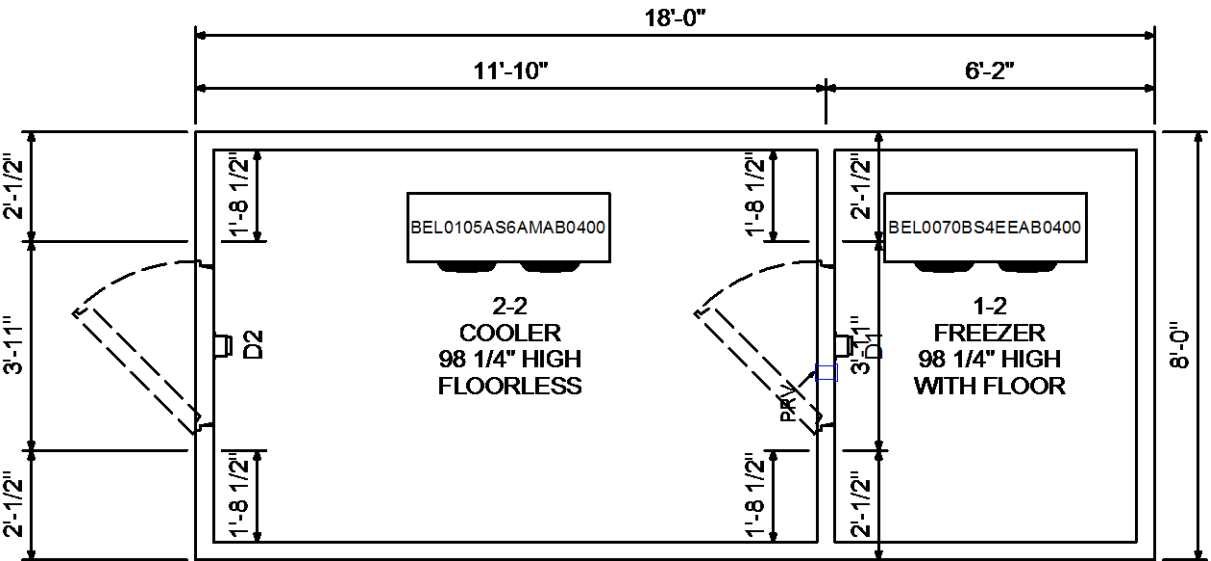
- (1) 1.5 HP Bohn DOE Compliant Outdoor Condensing Unit, Model BCH0019LBACHA0200, 208-230/1/60, MCA 15 Amps, Low Temperature, Hermetic, Air-cooled, R-404A, This refrigeration system is designed and certified for use in walk-in freezer applications - AWEF3.03, (6340 Btu/hr @ -10°F room temperature and 95°F ambient)
- (1) Bohn DOE Compliant BEL0070BS4EEAB0400, Low Profile Electric Defrost, 1 Fan Amps with Fixed Speed EC motor
- (1) Extended 4 year compressor Warranty

**Wall Panels**

Interior Finish: 26 Ga. Stucco Embossed Acrylume  
Exterior Finish: 26 Ga. Stucco Embossed Acrylume

**Ceiling Panels**

Interior Finish: 26 Ga. Stucco Embossed Acrylume  
Exterior Finish: 26 Ga. Stucco Embossed Acrylume



Customer Approval:

Quote #: 21-11776 Revision: 2	Project: Old Koke Plant	Date: 10/15/2021	
Customer:US Foods Culinary Equipment & Supplies (FL)	Page 1 of 3		



**-SPECIFICATION-Continued**

**Floor Panels**

Standard NSF Floor panel rated for 600 LBS/ SQ. FT.  
 .050 Smooth Aluminum Integral

**Application:** Foot Traffic - No Rolling Carts

**Compartment 2 - Cooler**

**D2 -** (1) Standard 36" x 76" Right hinged flush door with brushed hardware. Interior & Exterior finish: 26 Ga. Stucco Embossed Acrylume. Heavy duty deadbolt handle latch. Digital LED Thermometer with pilot light switch. 1807 11w, Vapor Proof, 120V. LED fixture. 82 Lumens /watt Angled face . Requires 115vac. 1 amps.

**Refrigeration:**

- (1) 0.75 HP Bohn DOE Compliant Outdoor Condensing Unit, Model BCH0008MBACZA0000, 208-230/1/60, MCA 15 Amps, BTUH 8980, Medium Temperature, Scroll, Air-cooled, R-404A, This refrigeration system is designed and certified for use in walk-in cooler applications -
- (1) Bohn DOE Compliant BEL0105AS6AMAB0400, Low Profile Air Defrost, 1.8 Fan Amps with 2 Speed EC motor

**Wall Panels**

Interior Finish: 26 Ga. Stucco Embossed Acrylume  
 Exterior Finish: 26 Ga. Stucco Embossed Acrylume

**Ceiling Panels**

Interior Finish: 26 Ga. Stucco Embossed Acrylume  
 Exterior Finish: 26 Ga. Stucco Embossed Acrylume

**Accessories Shipped Loose**

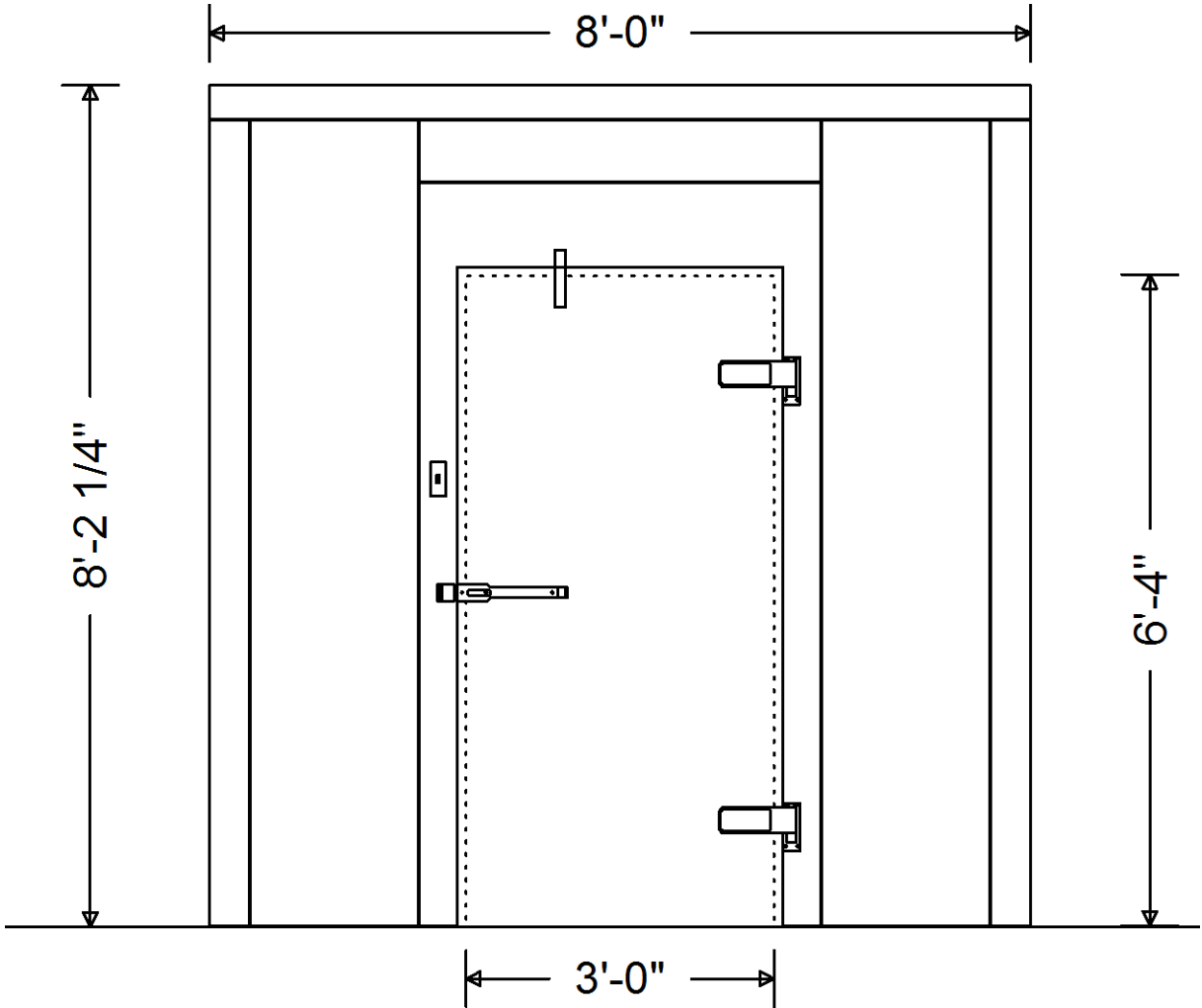
- (6) NSF VINYL FLOOR SCREED 72"

**Notes:**

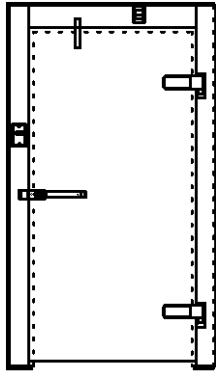
\* Allow a minimum of 2" clearance around all sides of the walk-in for proper air circulation

Customer Approval:

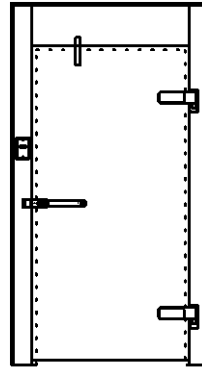
\_\_\_\_\_



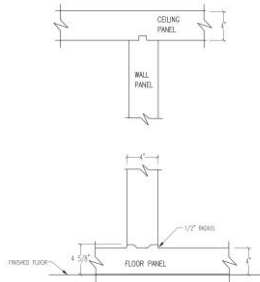
Quote #: 21-11776 Revision: 2	Project: Old Koke Plant	Date: 10/15/2021	
Customer:US Foods Culinary Equipment & Supplies (FL)	Page 2 of 3		



D1

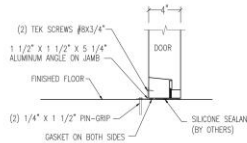


D2



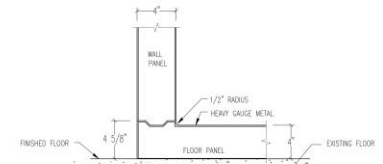
STANDARD PARTITION WALL

20012: STANDARD PARTITION WALL UPCHARGE, WITH FLOOR (PER LINEAR FT. OF PARTITION WALL LENGTH)



FLUSH DOOR JAMB ALUMINUM ANGLE

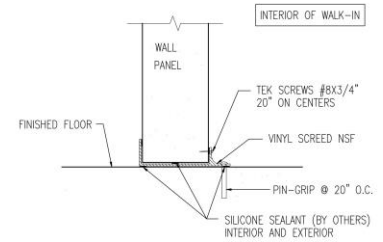
20018: INTERIOR FLUSH DOOR JAMB ALUMINUM ANGLE. 1 1/2" X 1 1/2" X 5 1/4" TO SECURE TO CONCRETE FLOOR. QUANTITY 2 REQUIRED



STANDARD FLOOR & WALL DETAIL (800 LBS / FT<sup>2</sup>, DIST. LOAD)

1A: STANDARD NSF ALUMINUM FLOOR (COOLER OR FREEZER) - .050 SMOOTH ALUMINUM INTEGRAL, NOT REINFORCED, RATED FOR 800 LBS./ SQ. FT. UNIFORMLY DISTRIBUTED (APPLICATION: FOOT TRAFFIC-NO ROLLING CARTS)

NOTE: IMPORTANT REQUIREMENT FOR INSTALLATION IS TO HAVE A PERFECTLY LEVEL FLOOR.



VINYL CREED WALL PANEL

8823: NSF VINYL FLOOR SCREED 72"

Quote #: 21-11776 Revision: 2

Project: Old Koke Plant

Date: 10/15/2021

Customer: US Foods Culinary Equipment & Supplies (FL)

Page 3 of 3



**-SPECIFICATION-**

**Box Height:** Cooler 8'-2 1/4" (7'-10 1/4" Interior)

**Insulation:** 4" thick AK-XPS4 Extruded foam UL classified core flame spread 15, Smoke rating less than 165

**Compartment 1 - Cooler**

**D1 -** (4) Anthony Door model # 401 (new size)-3075-NT left hinged glass display doors with Black finish, Trimline Black handle, LED 72" lights and (5)27" deep shelves.

**Refrigeration:**

(2) Bohn Pro3 - DOE Compliant Indoor Top Mount Self-contained Refrig. Unit, Model PT0068MBNAMSA, 208-230/1/60, MCA 9.3 Amps, BTUH 6770, Medium Temperature, R-448A, 2 years compressor and parts warranty from date of shipment within Continental USA.

**Wall Panels**

Interior Finish: 26 Ga. Stucco Embossed Acrylume

Exterior Finish: 26 Ga. Stucco Embossed Acrylume

**Ceiling Panels**

Interior Finish: 26 Ga. Stucco Embossed Acrylume

Exterior Finish: 26 Ga. Stucco Embossed Acrylume

**Accessories Shipped Loose**

(2) Extended 3 Year Comp Warranty

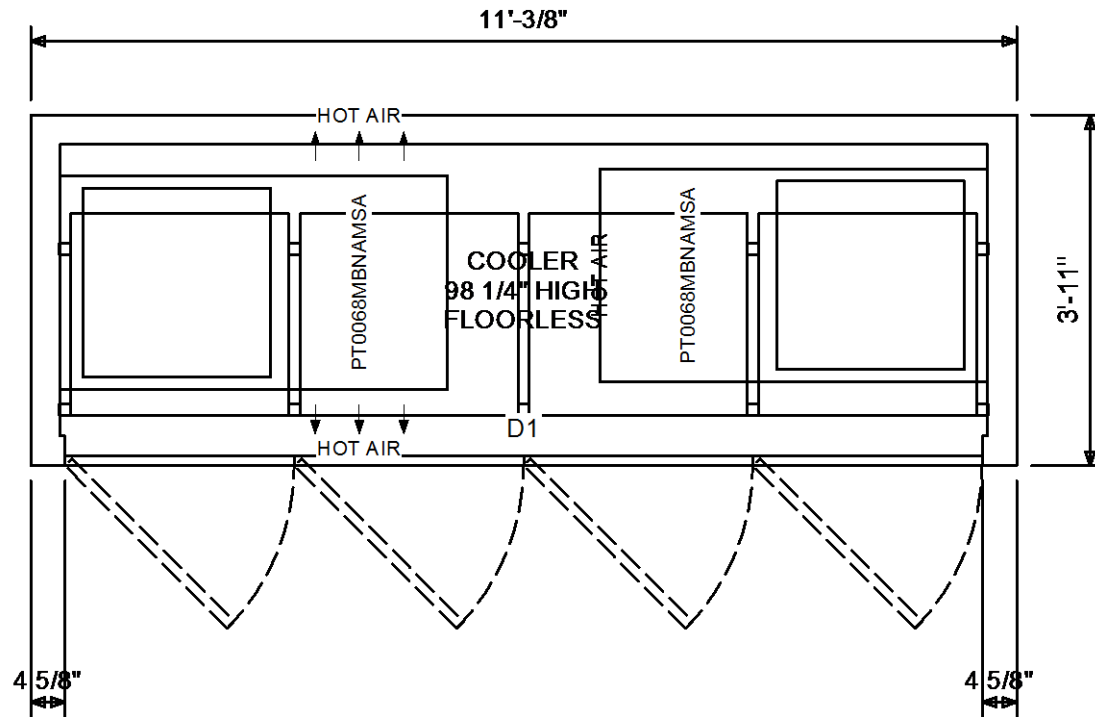
(5) NSF VINYL FLOOR SCREED 72"

(1) PRV 4" Diameter (mounted on 4" wall next to door) Good up to 1,600 cubic ft.

(1) Vapor proof light, outside switch, & thermometer (loose)for Plug Doors Cooler or Freezer

**Notes:**

\* Allow a minimum of 2" clearance around all sides of the walk-in for proper air circulation



Customer Approval:

Quote #: 21-12173 Revision: 3

Project: Old Koke Plant - Reach In

Date: 10/15/2021

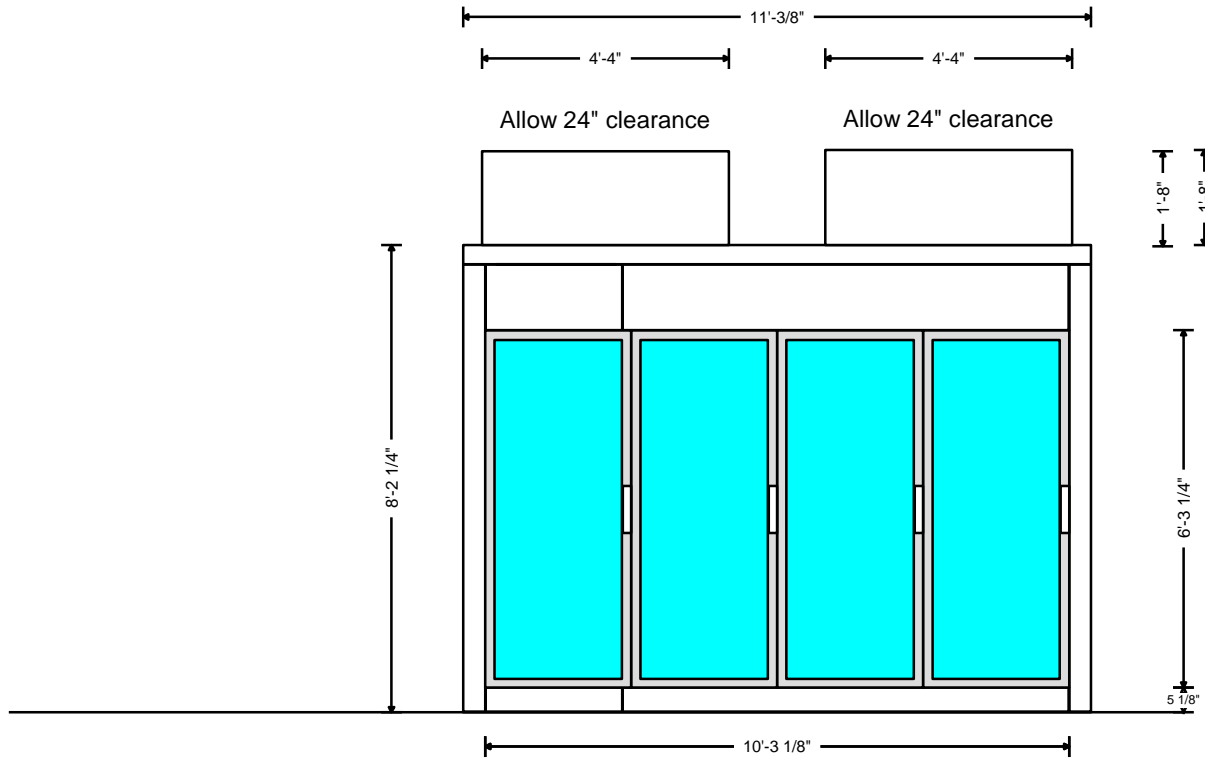
Customer:US Foods Culinary Equipment & Supplies (FL)

Page 1 of 3



**-SPECIFICATION-Continued**

\* Allow a minimum of 24" clearance above top mounted refrigeration for installation



Customer Approval:

Quote #: 21-12173 Revision: 3

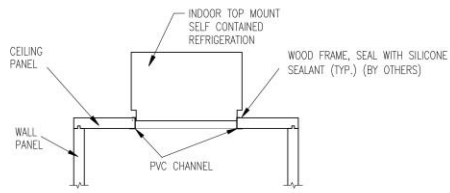
Project: Old Koke Plant - Reach In

Date: 10/15/2021

Customer: US Foods Culinary Equipment & Supplies (FL)

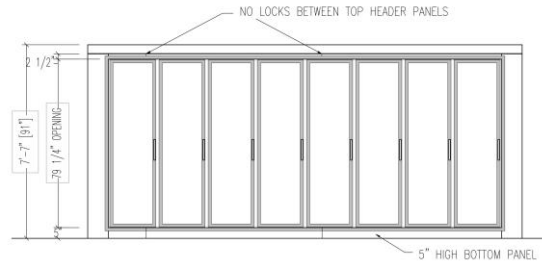
Page 2 of 3





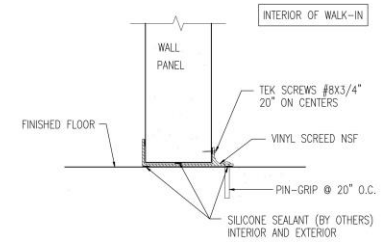
**TOP MOUNT SELF CONTAINED**

20027: TOP MOUNT SELF CONTAINED INDOOR CEILING PANEL FRAMED CUT-OUT



**GLASS DOOR FRAME OPENING**

8080: Glass door opening on wall



**VINYL CREED WALL PANEL**

8823: NSF VINYL FLOOR SCREED 72"

Quote #: 21-12173 Revision: 3

Project: Old Koke Plant - Reach In

Date: 10/15/2021

Customer: US Foods Culinary Equipment & Supplies (FL)

Page 3 of 3

