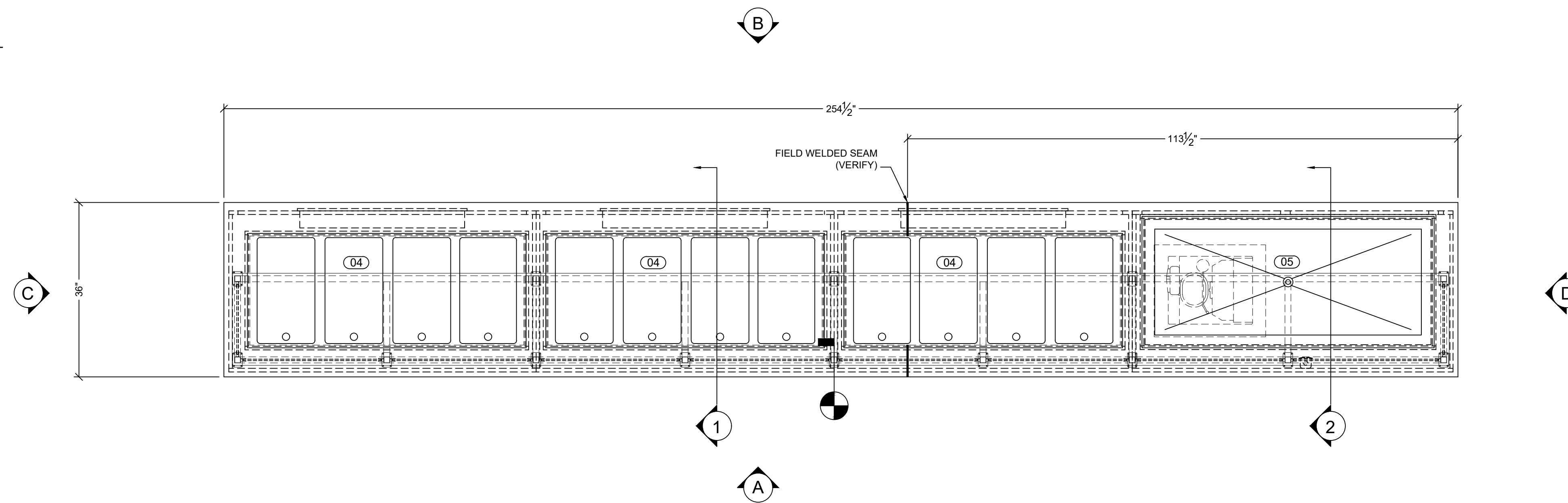
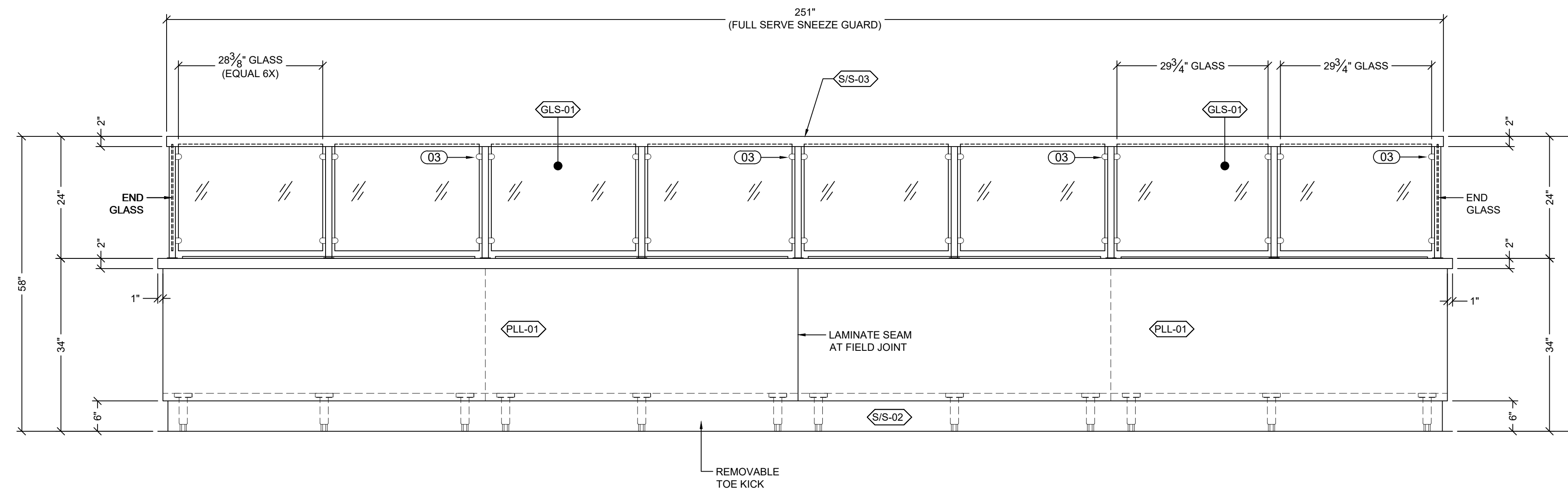


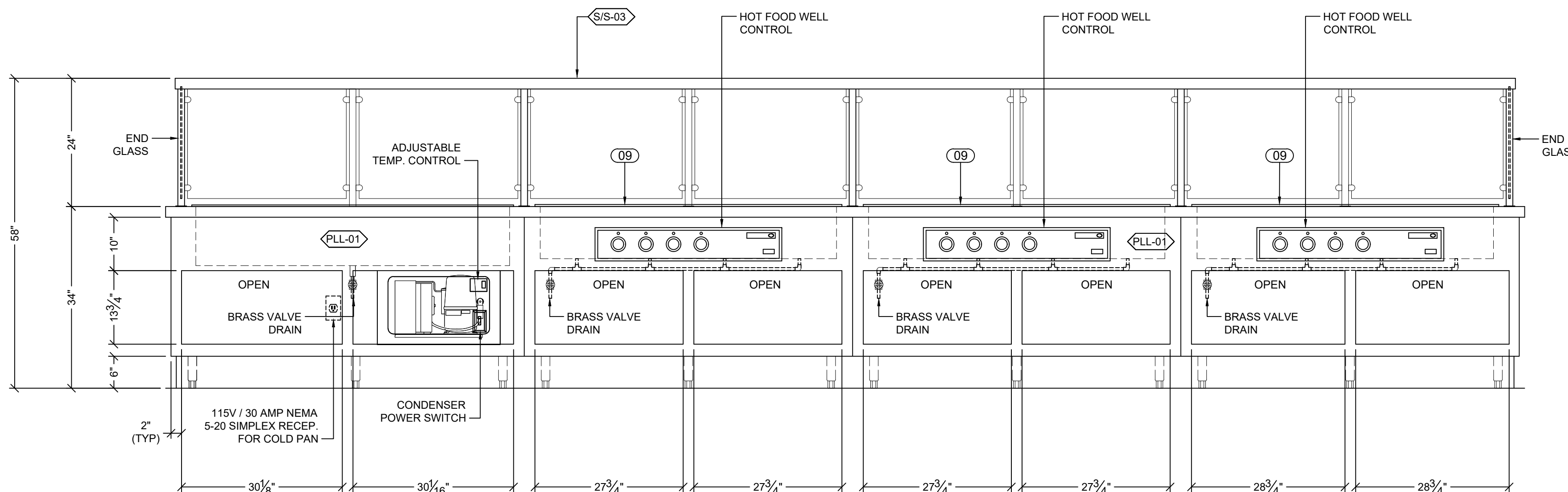
DENOTES CABINET FIELD JOINT



PLAN VIEW
3/4" = 1'-0"



ELEVATION "A"
3/4" = 1'-0"



ELEVATION "B"
3/4" = 1'-0"

LISTED
UL 2F98
CUSTOM-BUILT
FOOD SERVICE
EQUIPMENT

NSF

1. Foodservice equipment manufactured by Savannah Industrial Solutions, LLC is built in accordance with the latest requirements and standards of NSF International (Sanitation) and Underwriters Laboratories (Safety).
2. In the event a state or local code requirement exceeds those of NSF International and/or Underwriters Laboratory, failure to notify Savannah Industrial Solutions, LLC in advance of production and in writing, may result in the equipment failing to pass local inspection(s) and/or additional charges for making modifications to the equipment.

GENERAL NOTES

ITEM	DESCRIPTION

COMPONENTS

ITEM	QTY	MANUFACTURER, PART #, AND DESCRIPTION	SAV PART #	SUPPLIED BY:	INSTALLED BY:
01	24	KASON #6178050004 S/S LEG PLATE	041280	SIS	SIS
02	24	KASON #61752HF6055 S/S ADJUSTABLE LEGS	041430	SIS	SIS
03	40	CRL# ZMF06SS GLASS CLIPS	042397	SIS	SIS
04	3	WELLS #MOD400TDM HOT FOOD WELL	-	SIS	SIS
05	1	SIS AFPC4-7 SELF CONT. REFRIG. COLD PAN	-	SIS	SIS

MATERIAL / FINISH

SSL = Stainless Steel Laminate NRS = Natural Stone SLS = Solid Surface TLF = Tile
 MMS = Man Made Stone S/S = Stainless Steel CVB = Cove Base STN = Stone
 PLL = Plastic Laminate SSM = Sheet Metal PNT = Paint MLD = MOLDING
 PLY = Plywood STA = Stain BRK = Brick GLV = Galvanized
 GLV = Galvanized Metal STL = Steel INS = Insulation SND = Sound Deadener
 CTB = Cutting Board

PLL-01	FORMICA PLASTIC LAMINATE "LIGHT BROWN" (VERIFY MODEL NUMBER)
PLL-02	FORMICA PLASTIC LAMINATE "WHITE" INTERIOR CABINET FLOOR AND SHELVES
PLY-01	3/4" PLYWOOD
MEL-01	WHITE MELAMINE - INTERIOR WALLS AND SUBSTRATE
S/S-01	14 GA. STAINLESS STEEL
S/S-02	16 GA. STAINLESS STEEL
S/S-03	18 GA. STAINLESS STEEL
S/S-04	1-1/4" SQ. STAINLESS STEEL TUBE FRAME
GLS-01	1/4" TEMPERED GLASS

SHEET 1 OF 2

APPROVALS

CUSTOMER APPROVAL

APPROVED BY _____ DATE: _____

APPROVED AS NOTED _____ DATE: _____

REVISE & RESUBMIT _____ DATE: _____

SIS APPROVAL

APPROVED BY _____ DATE: _____

REVISIONS

ITEM	DATE	REV. BY:	DESCRIPTION
A	11.03.21	PR	REVISED PER MARK UP
B	11.05.21	PR	REVISED PER MARK UP

SIS SAVANNAH INDUSTRIAL SOLUTIONS
735 GLENDE RD. SAVANNAH, TN 38372
PHONE 731-925-2200 FAX 731-925-2840

MEMBER
NAFEM

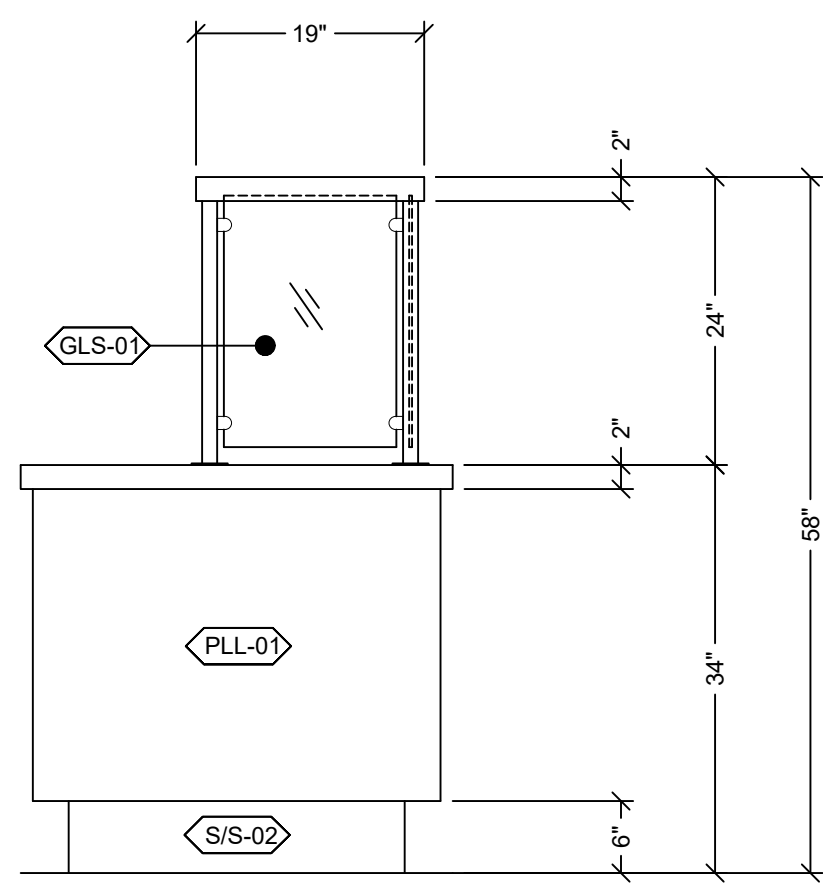
CORIAN CERTIFIED
CORIAN A3485

PROJECT NAME & LOCATION:
OLD COKE PLANT
JACKSON, MS

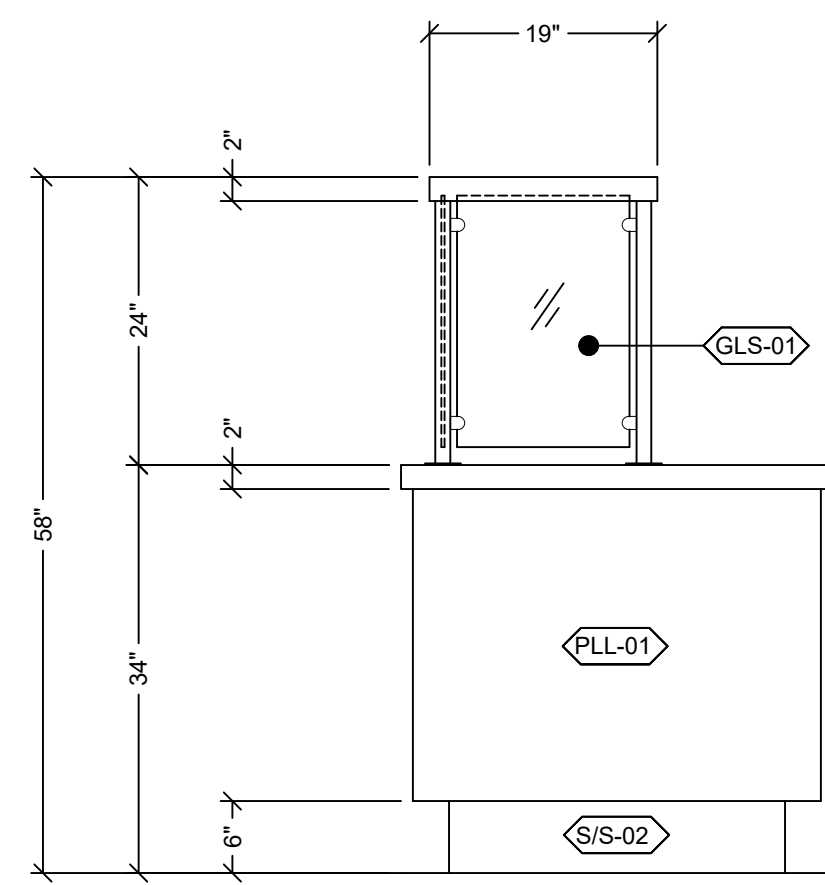
ITEM #5 HOT FOOD COUNTER

This confidential drawing is the property of SAVANNAH INDUSTRIAL SOLUTIONS, LLC. Modification, reproduction, and/or distribution without the expressed written consent of SIS is prohibited. ©2019 SAVANNAH INDUSTRIAL SOLUTIONS, LLC

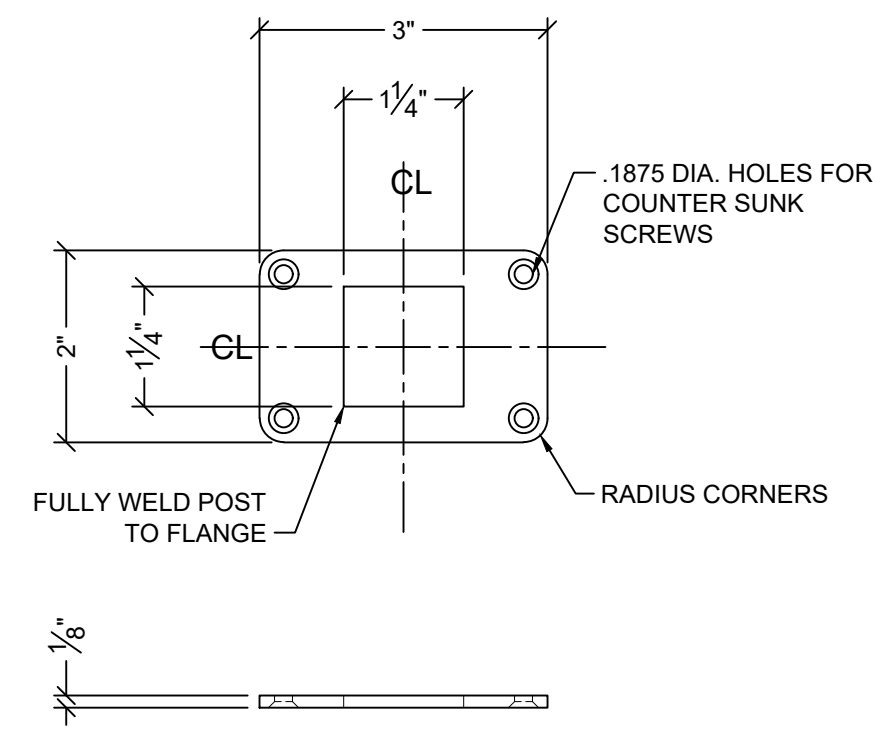
DATE: 9.09.21
SCALE: 3/4" = 1'-0"
DRAWN BY: PR
SUBMITTED BY: NL
PROJECT# TRACKING#
SHEET NO. S1



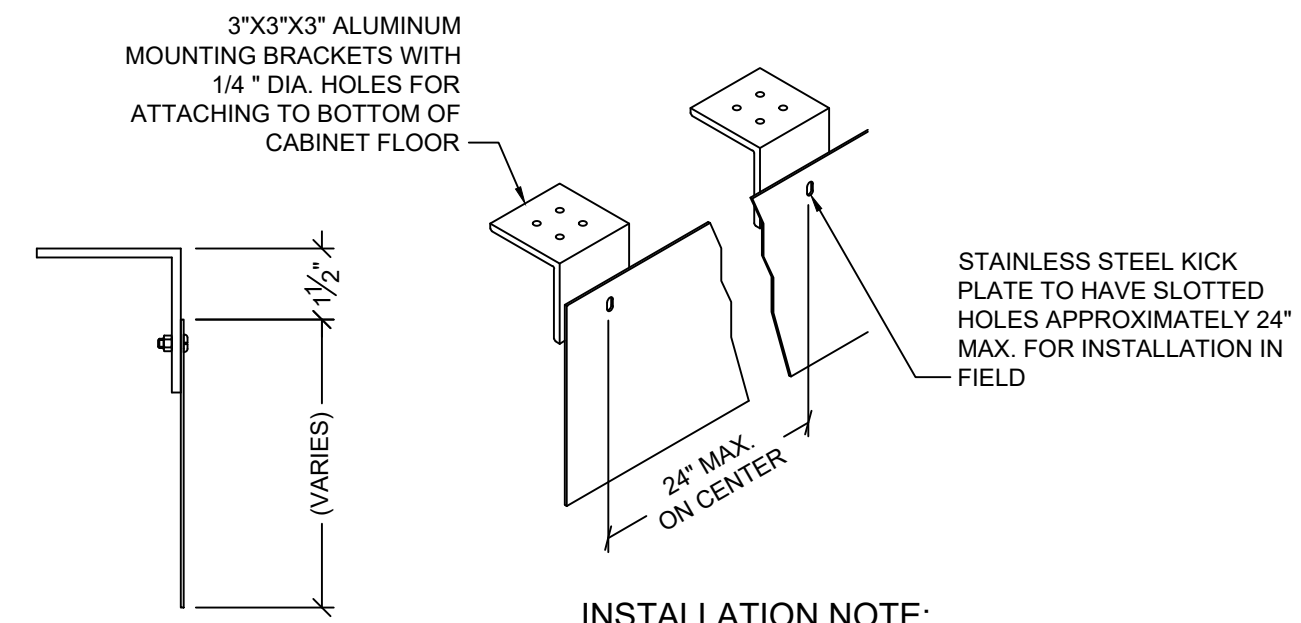
ELEVATION "C"
3/4" = 1'-0"



ELEVATION "D"
3/4" = 1'-0"

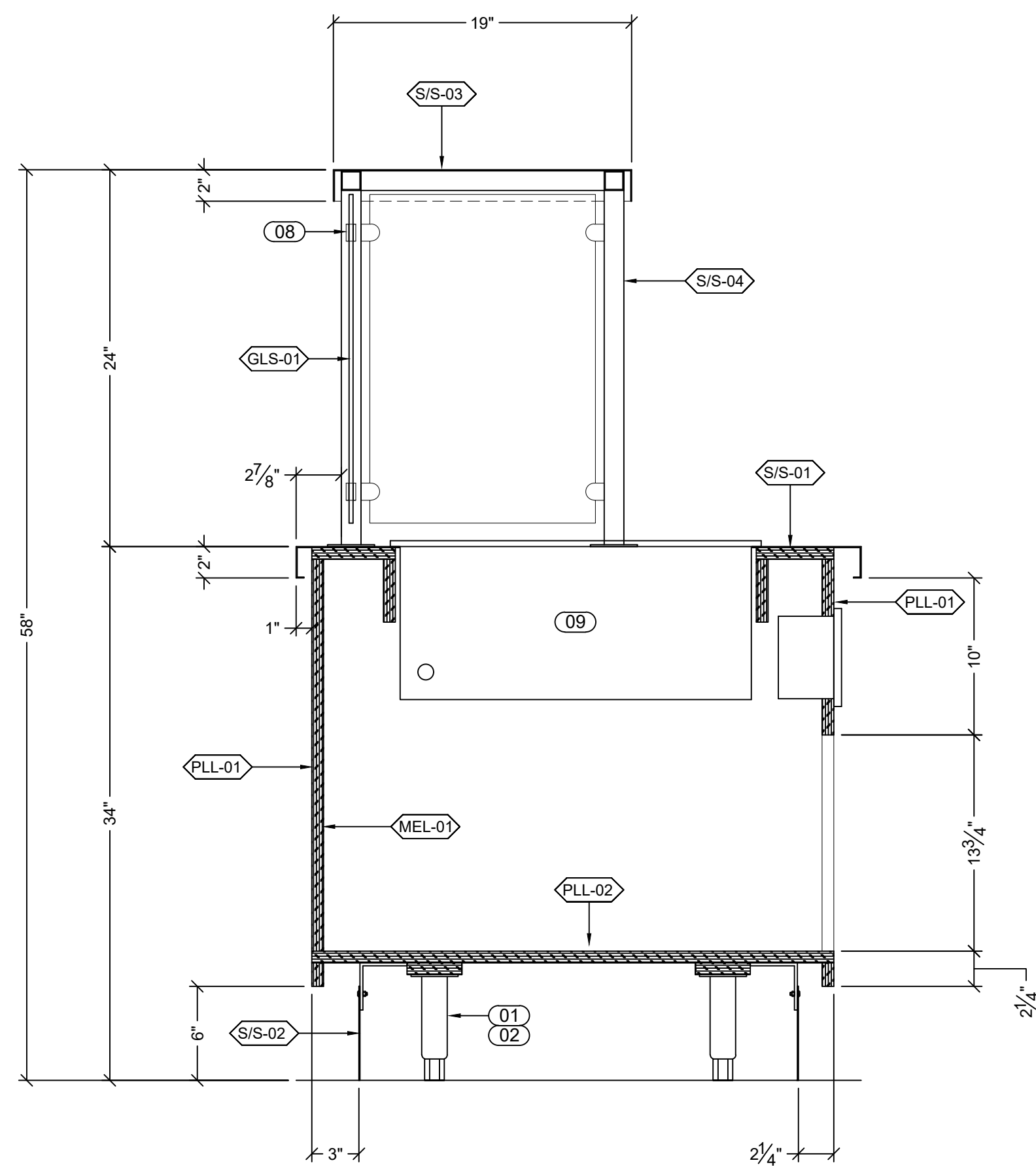


POST FLANGE
(14 REQUIRED)

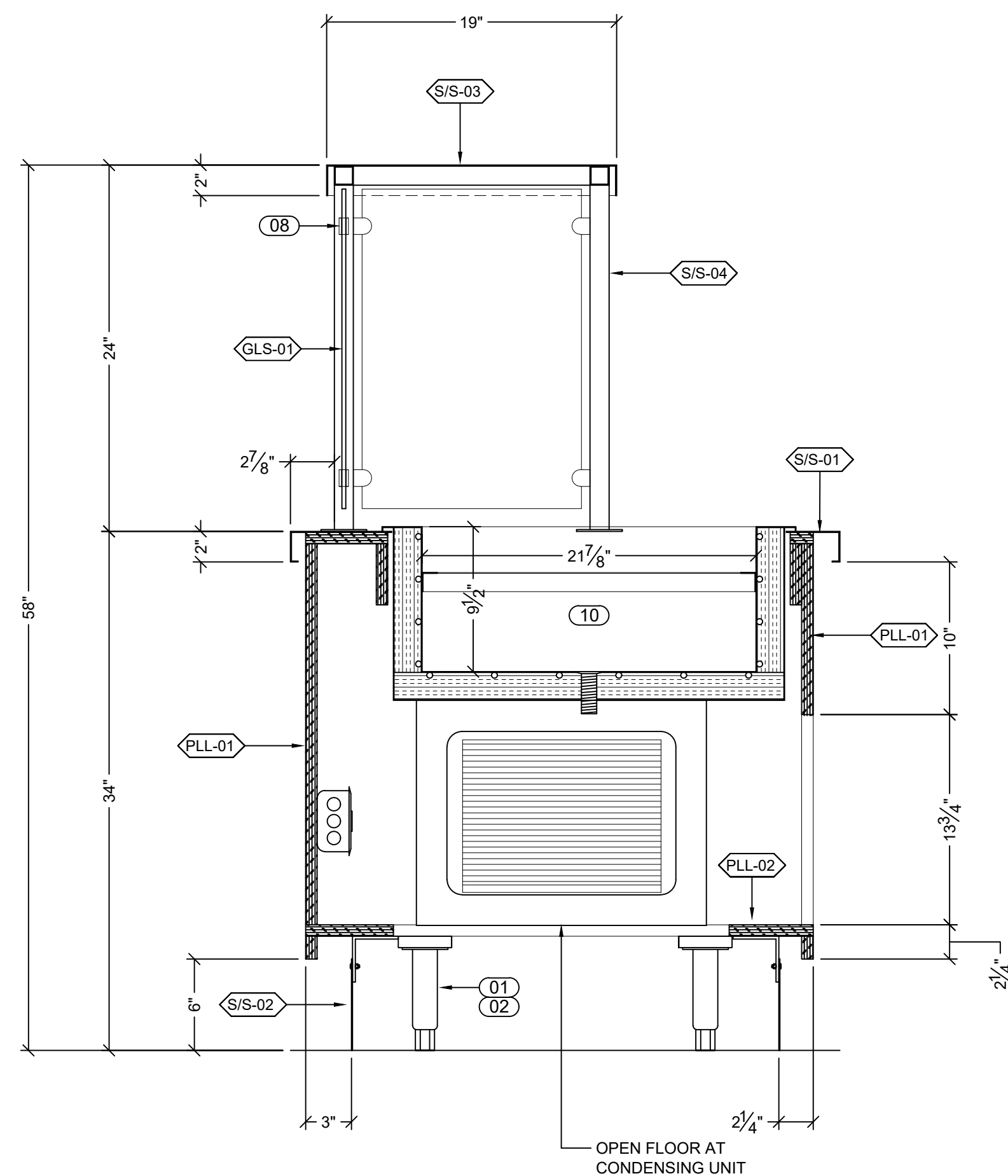


INSTALLATION NOTE:
KICK PLATE TO BE FASTENED ONCE COUNTERS ARE SET IN PLACE AND LEVELED.
USE #10 SHEET METAL SCREWS TO BACKER ANGLE.

TOE KICK DETAIL
3" = 1'-0"



SECTION 1
1-1/2" = 1'-0"



SECTION 2
1-1/2" = 1'-0"

LISTED
UL
2F98
CUSTOM-BUILT
FOOD SERVICE
EQUIPMENT

NSF

1. Foodservice equipment manufactured by Savannah Industrial Solutions, LLC is built in accordance with the latest requirements and standards of NSF International (Sanitation) and Underwriters Laboratories (Safety).
2. In the event a state or local code requirement exceeds those of NSF International and/or Underwriters Laboratory, failure to notify Savannah Industrial Solutions, LLC in advance of production and in writing, may result in the equipment failing to pass local inspection(s) and/or additional charges for making modifications to the equipment.

GENERAL NOTES

ITEM	DESCRIPTION

COMPONENTS

ITEM	QTY	MANUFACTURER, PART #, AND DESCRIPTION	SAV PART #	SUPPLIED BY:	INSTALLED BY:
01	24	KASON #6178050004 S/S LEG PLATE	041280	SIS	SIS
02	24	KASON #61752HF6055 S/S ADJUSTABLE LEGS	041430	SIS	SIS
03	40	CRL# ZMF06SS GLASS CLIPS	042397	SIS	SIS
04	3	WELLS #MOD400TDM HOT FOOD WELL	-	SIS	SIS
05	1	SIS AFPCP4-7 SELF CONT. REFRIG. COLD PAN	-	SIS	SIS

MATERIAL / FINISH

SSI = Stainless Steel Laminite NRS = Natural Stone SLS = Solid Surface TLF = Tile
 MMS = Man Made Stone S/S = Stainless Steel CVB = Cove Base STN = Stone
 PLL = Plastic Laminite SSM = Sheet Metal PNT = Paint MLD = MOLDING
 PLY = Plywood STA = Stain BRK = Brick GLV = Galvanized
 GLV = Galvanized Metal STL = Steel INS = Insulation SND = Sound Deadener
 CTB = Cutting Board

PLL-01	FORMICA PLASTIC LAMINATE "LIGHT BROWN" (VERIFY MODEL NUMBER)
PLL-02	FORMICA PLASTIC LAMINATE "WHITE" INTERIOR CABINET FLOOR AND SHELVES
PLY-01	3/4" PLYWOOD
MEL-01	WHITE MELAMINE - INTERIOR WALLS AND SUBSTRATE
S/S-01	14 GA. STAINLESS STEEL
S/S-02	16 GA. STAINLESS STEEL
S/S-03	18 GA. STAINLESS STEEL
S/S-04	1-1/4" SQ. STAINLESS STEEL TUBE FRAME
GLS-01	1/4" TEMPERED GLASS

SHEET 2 OF 2

APPROVALS

CUSTOMER APPROVAL

APPROVED BY _____ DATE: _____

APPROVED AS NOTED _____ DATE: _____

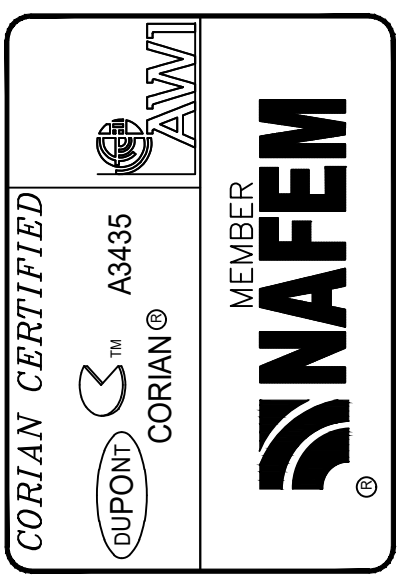
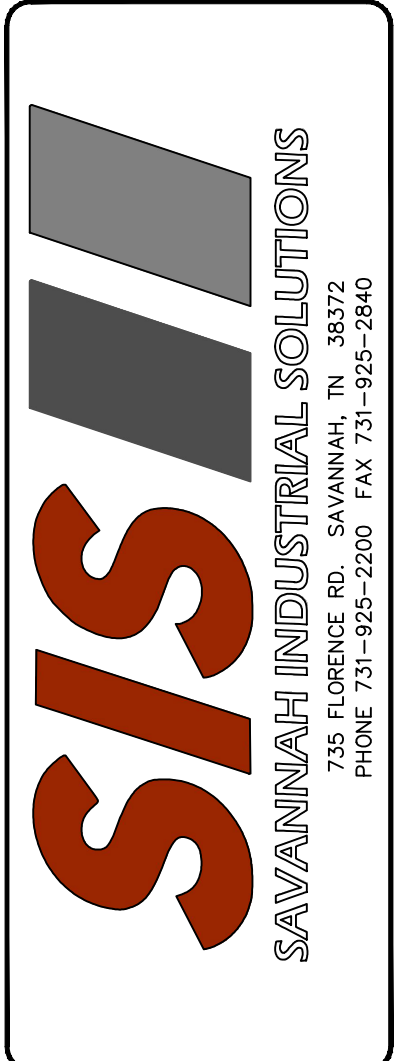
REVISE & RESUBMIT _____ DATE: _____

SIS APPROVAL

APPROVED BY _____ DATE: _____

REVISIONS

ITEM	DATE	REV. BY:	DESCRIPTION
Δ	11.03.21	PR	REVISED PER MARK UP
Δ	11.05.21	PR	REVISED PER MARK UP



PROJECT NAME & LOCATION:
OLD COKE PLANT
JACKSON, MS

ITEM #5 HOT FOOD COUNTER

This confidential drawing is the property of SAVANNAH INDUSTRIAL SOLUTIONS, LLC. Modification, reproduction, and/or distribution without the expressed written consent of SIS is prohibited. ©2019 SAVANNAH INDUSTRIAL SOLUTIONS, LLC.

DATE: 9.09.21

SCALE: 3/4" = 1'-0"

DRAWN BY: PR

SUBMITTED BY: NL

PROJECT#	TRACKING#
-	-

SHEET NO. S2