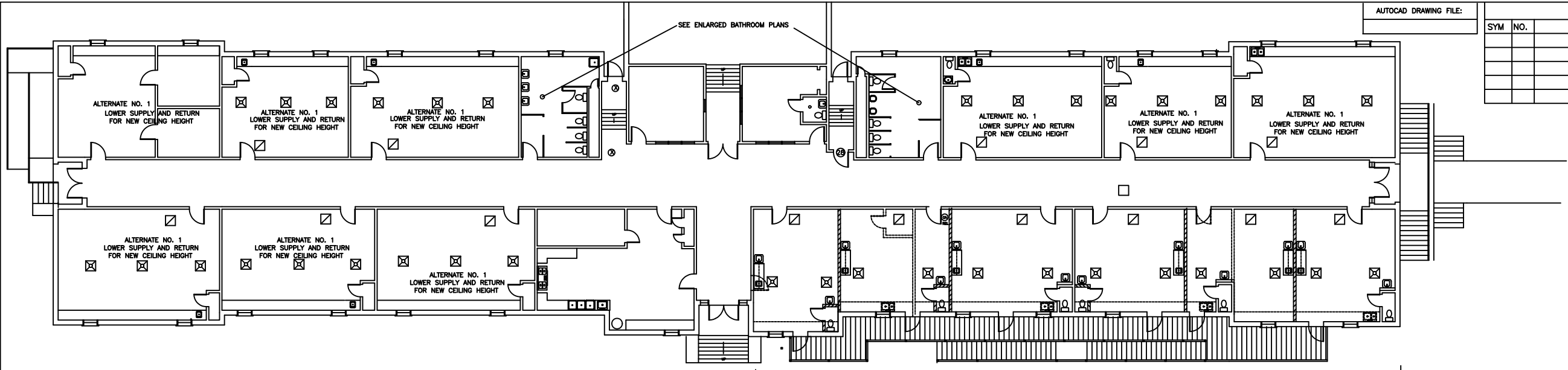
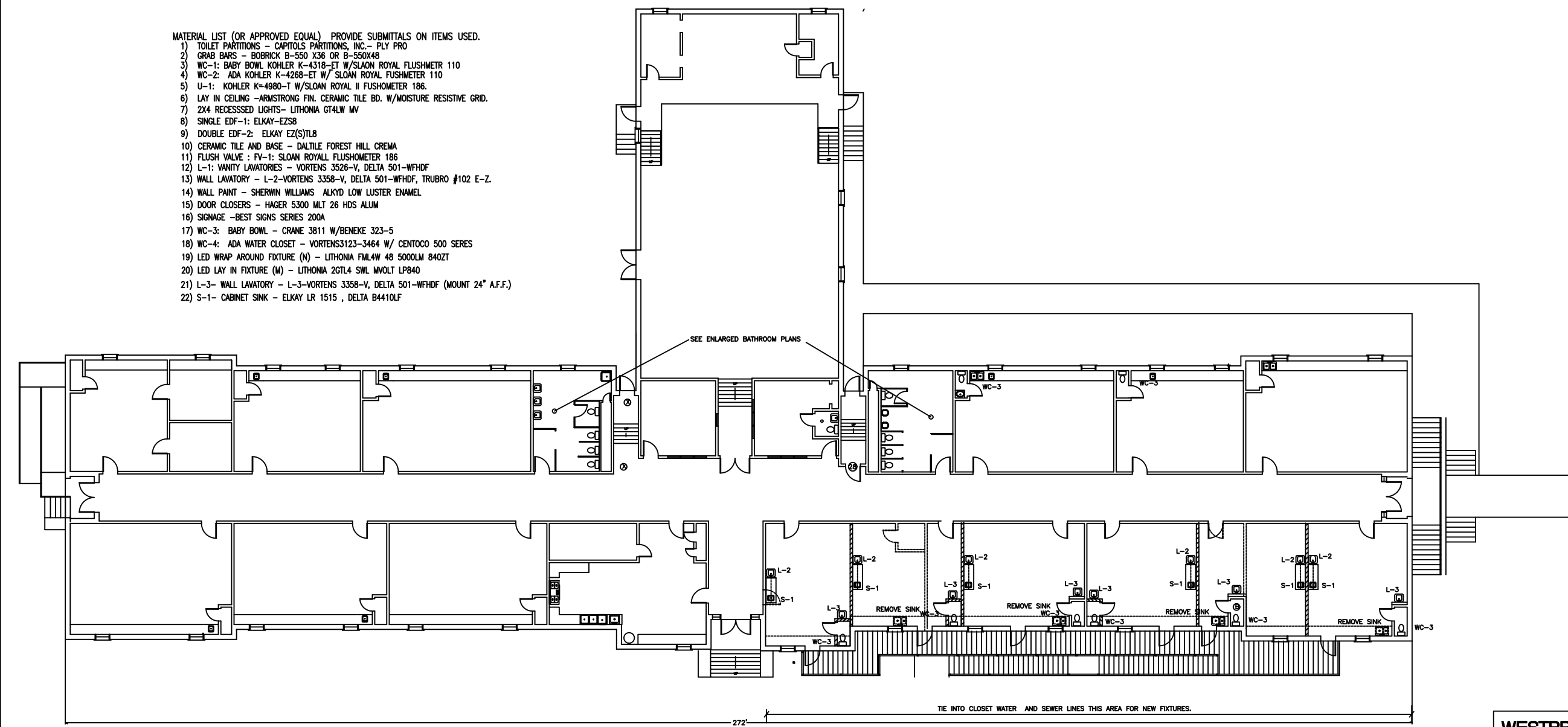


REVISIONS		DATE:	APPROVED
SYM	NO.	DESCRIPTION	



**HVAC PLAN - WESTBROOK**  
SCALE: 3/32" = 1' - 0"  
MODIFY EXISTING SUPPLY AND RETURN FOR NEW LAYOUT THIS AREA

- MATERIAL LIST (OR APPROVED EQUAL) PROVIDE SUBMITTALS ON ITEMS USED.
- 1) TOILET PARTITIONS - CAPITOLS PARTITIONS, INC. - PLY PRO
  - 2) GRAB BARS - BOBRICK B-550 X36 OR B-550X48
  - 3) WC-1: BABY BOWL KOHLER K-4318-ET W/SLOAN ROYAL FLUSHMETER 110
  - 4) WC-2: ADA KOHLER K-4268-ET W/ SLOAN ROYAL FUSHMETER 110
  - 5) U-1: KOHLER K-4980-T W/SLOAN ROYAL II FUSHOMETER 186.
  - 6) LAY IN CEILING - ARMSTRONG FIN. CERAMIC TILE BD. W/MOISTURE RESISTIVE GRID.
  - 7) 2X4 RECESSED LIGHTS- LITHONIA GT4LW MV
  - 8) SINGLE EDF-1: ELKAY-EZ58
  - 9) DOUBLE EDF-2: ELKAY EZ(S)TL8
  - 10) CERAMIC TILE AND BASE - DALTILE FOREST HILL CREMA
  - 11) FLUSH VALVE : FV-1: SLOAN ROYAL FLUSHOMETER 186
  - 12) L-1: VANITY LAVATORIES - VORTENS 3526-V, DELTA 501-WFHDF
  - 13) WALL LAVATORY - L-2-VORTENS 3358-V, DELTA 501-WFHDF, TRUBRO #102 E-Z.
  - 14) WALL PAINT - SHERWIN WILLIAMS ALKYD LOW LUSTER ENAMEL
  - 15) DOOR CLOSERS - HAGER 5300 MLT 26 HDS ALUM
  - 16) SIGNAGE -BEST SIGNS SERIES 200A
  - 17) WC-3: BABY BOWL - CRANE 3811 W/BENEKE 323-5
  - 18) WC-4: ADA WATER CLOSET - VORTENS3123-3464 W/ CENTOCO 500 SERES
  - 19) LED WRAP AROUND FIXTURE (N) - LITHONIA FML4W 48 5000LM 840ZT
  - 20) LED LAY IN FIXTURE (M) - LITHONIA 2GTL4 SWL MVOLT LP840
  - 21) L-3- WALL LAVATORY - L-3-VORTENS 3358-V, DELTA 501-WFHDF (MOUNT 24" A.F.F.)
  - 22) S-1- CABINET SINK - ELKAY LR 1515 , DELTA B4410LF



**PLUMBING PLAN - WESTBROOK**  
SCALE: 3/32" = 1' - 0"  
TIE INTO CLOSET WATER AND SEWER LINES THIS AREA FOR NEW FIXTURES.

ENGINEERING TECHNOLOGIES  
**LAD**  
P. O. BOX 31379 JACKSON, MS 39286  
601-362-0866

**MISSISSIPPI ACTION FOR PROGRESS, INC.**  
1751 MORSON ROAD JACKSON, MISSISSIPPI 39209

**WESTBROOK HEAD START CENTER**  
**MECHANICAL PLAN**  
M1  
SCALE: AS SHOWN DRAWN BY: ADL  
DATE: 9/30/21 CHECK: ADL  
1 OF 1

PROGRESS PRINT ISSUE DATE: